



Boffa Miskell

website: www.boffamiskell.co.nz

email: info@boffamiskell.co.nz

News Item

Bayside Reserve Wins the Arthur Mead Environmental Engineering Award

21 June 2010

Bayside Reserve, a North Shore City Council and Boffa Miskell led stormwater management project, has won the prestigious Arthur Mead Environmental Award 2010 from the Auckland branch of the Institution of Professional Engineers of New Zealand.



Enhanced habitat and public walkways



Floating Island

The annual award recognises engineering projects which, in the opinion of the judges, best exemplifies sustainable management of resources and care for and consideration of environmental values.

North Shore City Council (NSCC) received the award for what the judges described as the project's clever mix of stormwater management, community involvement and environmental enhancement.

Boffa Miskell, as principal consultant and lead designer, worked closely with the Council to design and implement the project. Dempsey and Wood Civil contractors Limited was the contractor for the site works.

Bayside Reserve had a stormwater concrete stream channel which flowed into a detention pond. The pond, which was overlooked by Browns Bay residents, had silted up and was not functioning as intended.

“We saw the opportunity to extend what could have been a routine maintenance project into a demonstration project for sustainable design,” says Boffa Miskell project leader and landscape architect, Mark Lewis. “It became a multi-faceted approach to stormwater design in line with NSCC’s sustainable stormwater strategy.”

CONTACT INFORMATION

AUCKLAND

Ph: +64 (09) 358 2526

TAURANGA

Ph: +64 (07) 571 5511

WELLINGTON

Ph: +64 (04) 385 9315

CHRISTCHURCH

Ph: +64 (03) 366 8891

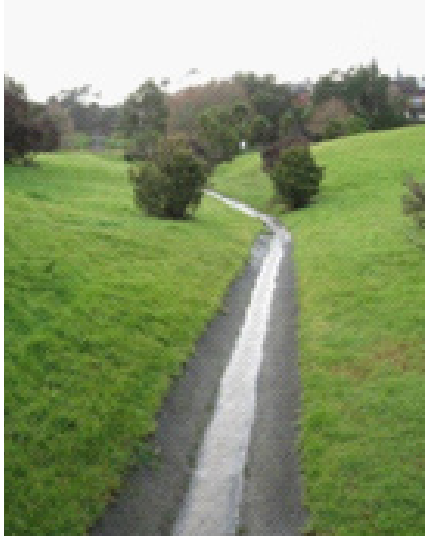


Boffa Miskell

website: www.boffamiskell.co.nz

email: info@boffamiskell.co.nz

News Item



Before



After

The project included improving water quality and flood management, enhancing ecological and amenity values in the stream and reserve, and facilitating community use and appreciation of the reserve and stream. The existing concrete stream channel was transformed into a naturalised stream, and the pond was reformed with forebays and vegetated floating islands, to enhance its water treatment function. Public walkways were constructed, aligned with maintenance access. Habitat was enhanced through non-spray weed control and diverse planting, including kahikatea-swamp maire and flax-cabbage tree communities.

“An essential aspect to the project was the level of positive community engagement that the North Shore City Council achieved through their consultation programme,” Mark says. “That, too, was one of the objectives – to create a sense of community involvement and ownership with increased environmental awareness in the local area.”

The judges commented that the community engagement had gone beyond normally expected standards and noted that the project had transformed the area into an attractive, yet functional community resource that the entire neighbourhood can enjoy, whilst at the same time treating contaminants in the stormwater runoff from the surrounding area.

The Bayside Reserve project also won a Bronze Award in the Landscape Design – Rural/Park/Recreational Category of the New Zealand Institute of Landscape Architects’ 2010 Resene Pride of Place Awards.

See Boffa Miskell News, Issue 23, p. 6

<http://www.boffamiskell.co.nz/news/downloads/Boffa-Miskell-Newsletter-23.pdf>

For further information please contact Mark Lewis on (09) 357 4402.

CONTACT INFORMATION

AUCKLAND

Ph: +64 (09) 358 2526

TAURANGA

Ph: +64 (07) 571 5511

WELLINGTON

Ph: +64 (04) 385 9315

CHRISTCHURCH

Ph: +64 (03) 366 8891